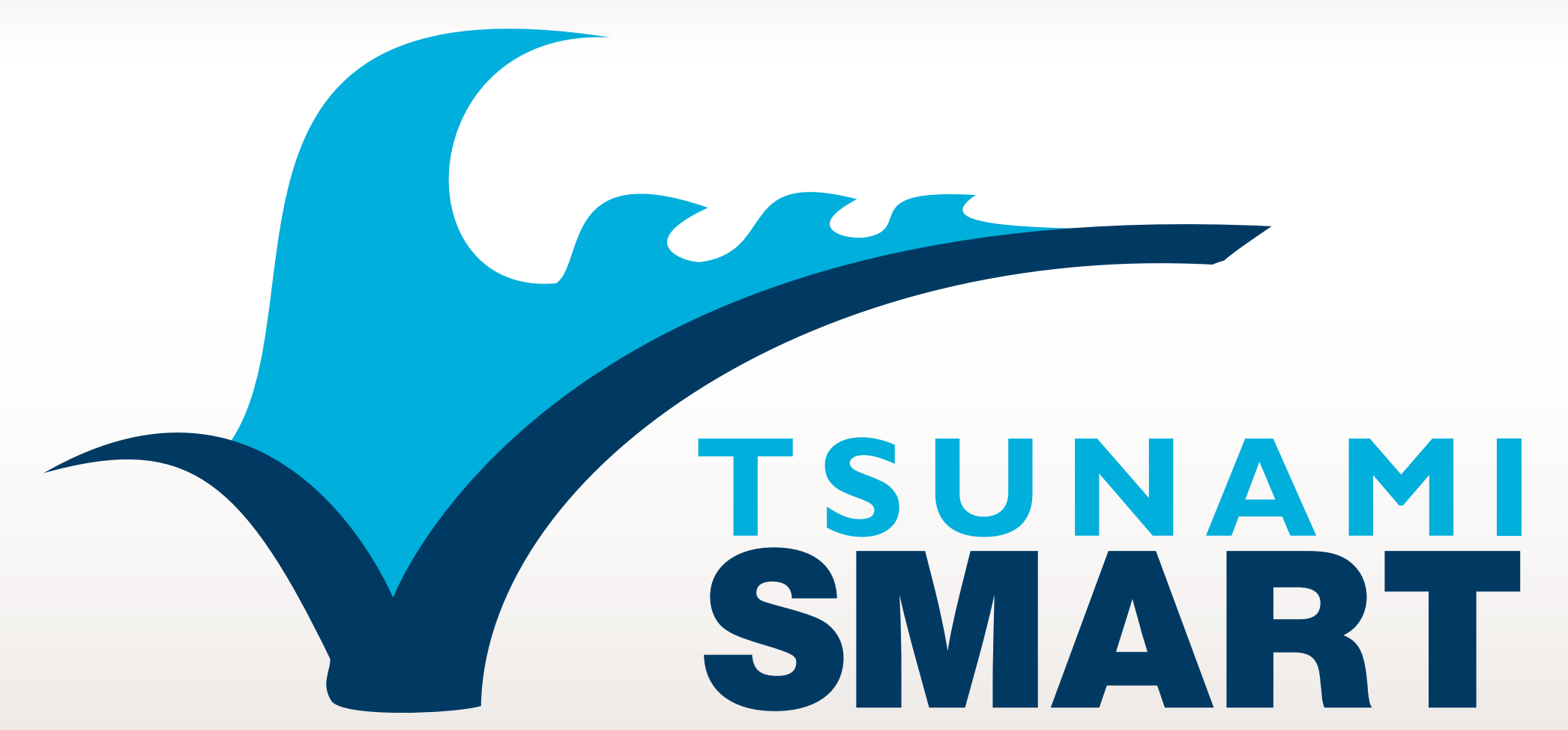


Tsunami Safety



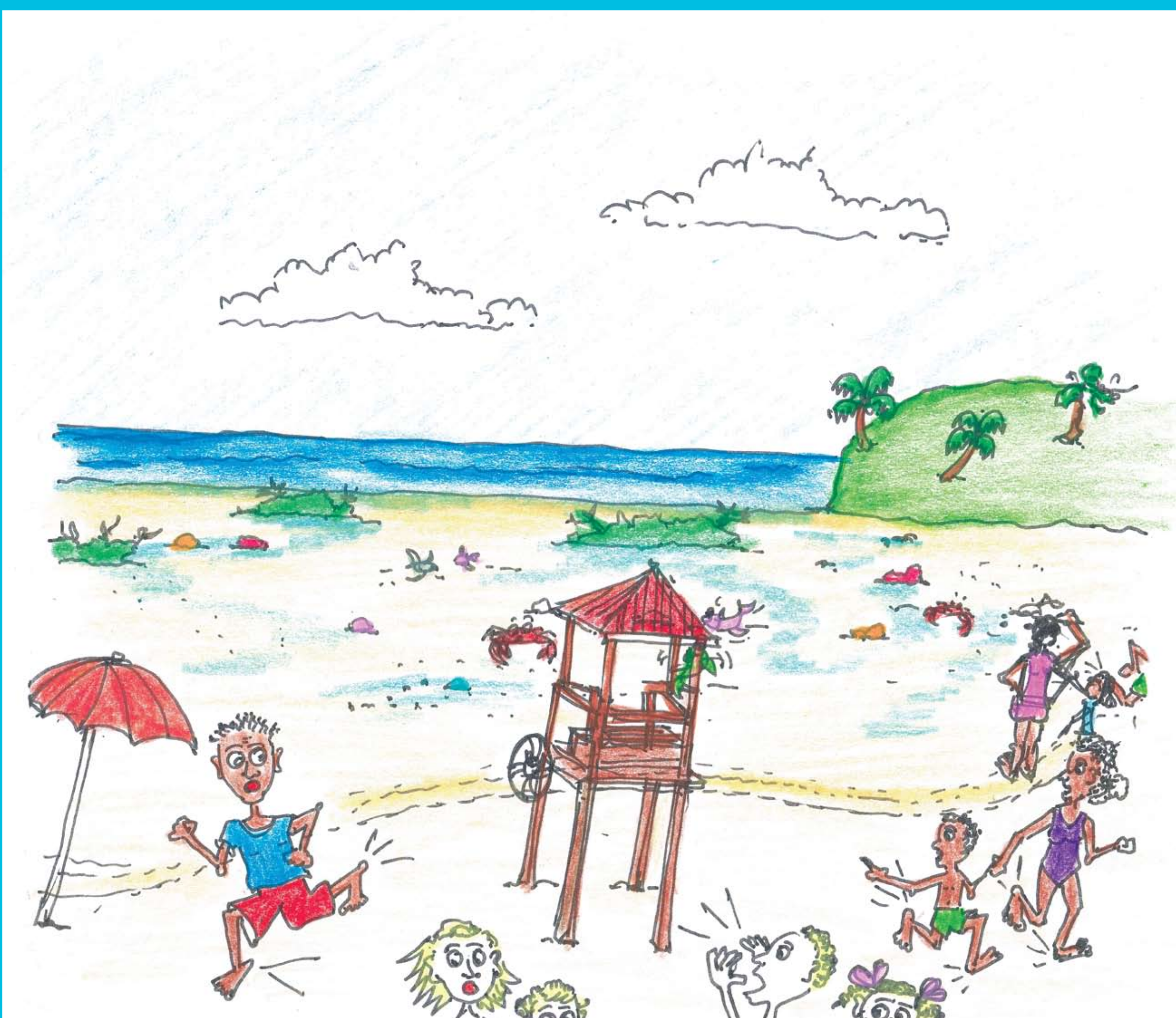
Recognizing any one of these natural tsunami warning signs at the coast could save your life.
Do not wait for official warnings before evacuating.

ANTIGUA & BARBUDA



FEEL a very strong earthquake?

RUN



SEE the water withdraw an unusual distance?

RUN



HEAR a strange roar?

RUN



Leave the beach immediately if any one of these signs occur and **RUN** to high ground.

High ground may also be a roof, upper floor of a building, or a strong tree.

BE TSUNAMI SMART, KNOW THE NATURAL SIGNS